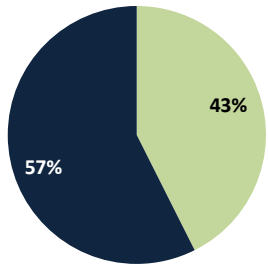
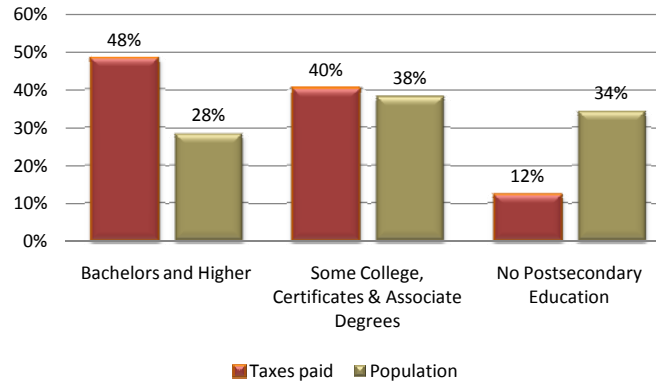


**Utah Population 25 and Over
2010 postsecondary attainment**



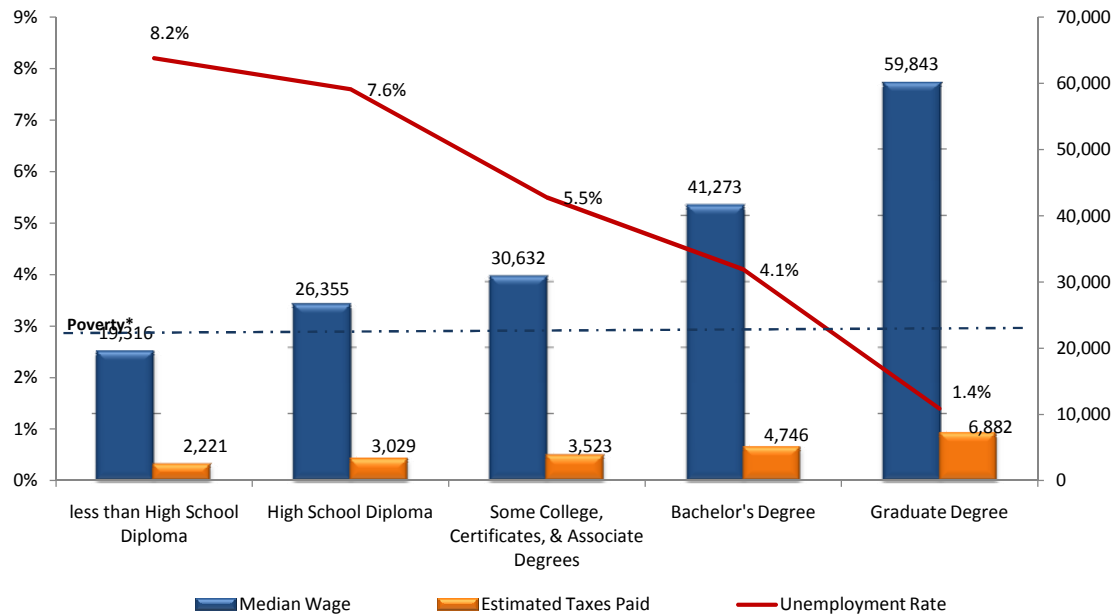
■ Postsecondary certificate or degree
■ No postsecondary credential

**Utah Population 25 and Over
by education level and state tax contribution**



Facts at a Glance

**Median Wages, Taxes & Unemployment
by Education Level**



Source: U.S. Census Bureau, American Communities Survey 2009
Utah Taxpayers Association (11.5% tax rate)
*Utah Division of Workforce Services (Foodstamp qualification for family of four, \$26,856)

Updated January 2012
Office of the Commissioner of Higher Education
Board of Regents Building, The Gateway
60 South 400 West
Salt Lake City, UT 84101-1284
(801) 321-7100
www.utahsbr.edu

2011-12 USHE Total Enrollments

Fall Headcount (Budget-related and Self-Support)

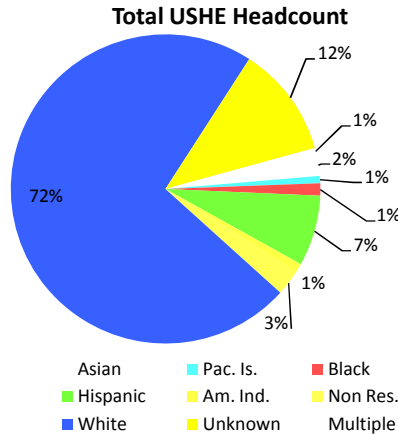
	Resident	Nonresident	Total	1-yr change	5-yr change
UU	26,636	5,037	31,673	-3.1%	3.8%
USU	25,999	2,995	28,994	12.5%	22.7%
WSU	23,385	2,098	25,483	5.6%	36.7%
SUU	6,832	918	7,750	-3.4%	10.3%
SC	4,159	306	4,465	1.8%	6.8%
DSC	8,540	546	9,086	3.8%	52.3%
UVU	30,277	3,118	33,395	2.2%	43.3%
SLCC	31,879	1,288	33,167	-2.4%	32.0%
Total	157,707	16,306	174,013	2.1%	23.8%

Source: 2012 USHE Data Book Tab C

Estimated Annualized FTE (Budget-related and Self-Support)

	Resident	Nonresident	Total	1-yr change	5-yr change
UU	24,635	5,312	29,947	1.7%	9.4%
USU	19,963	2,800	22,763	0.2%	20.7%
WSU	15,977	1,855	17,832	3.8%	20.4%
SUU	6,242	1,107	7,349	-5.3%	5.9%
SC	3,170	248	3,418	0.9%	12.4%
DSC	6,597	527	7,124	6.3%	69.5%
UVU	21,847	2,911	24,758	5.3%	48.0%
SLCC	19,168	956	20,124	-10.1%	11.3%
Total	117,599	15,716	133,315	0.2%	19.4%

Source: 2012 USHE Data Book Tab C



2011-12 Annual Undergraduate (1) Tuition and Fees

	Non-Resident		Resident	
	Resident	Resident	1-yr change	5-yr change
UU	\$6,763	\$21,388	7.8%	45.0%
USU	\$5,563	\$16,078	8.0%	40.9%
WSU	\$4,547	\$12,258	5.5%	32.5%
SUU	\$5,198	\$15,910	9.8%	45.8%
SC	\$2,910	\$9,586	6.0%	34.5%
DSC	\$3,888	\$13,536	11.4%	56.0%
UVU	\$4,584	\$12,940	6.9%	38.6%
SLCC	\$3,052	\$9,604	4.1%	27.0%

(1) Undergraduate Tuition and Centrally Administered Fees for 2 semesters at 15 credit hours.

USHE First Tier Tuition Set Aside for Financial Aid

Award Type	2010-11		Budget 2011-12	
	Number	Average Amount	Number	Average Amount
Grants	2,752	\$881	3,124	\$925
Loans	65	\$730	70	\$714
Other	562	\$874	637	\$1,004
Total Expenditures	\$ 3,439,848		\$ 4,450,832	

Regular and Adjunct Faculty Change 2010-11

Institution	Regular			Adjunct		
	2011	2010	Change	2011	2010	Change
UU	1,264	1,253	11	239	225	14
USU	896	856	40	129	123	6
WSU	457	477	(20)	350	324	26
SUU	231	220	11	117	112	5
Snow	117	115	2	54	55	(1)
DSC	154	148	6	195	174	21
UVU	507	459	48	550	524	26
SLCC	361	347	14	616	565	51
Total	3,987	3,875	112	2,250	2,102	148

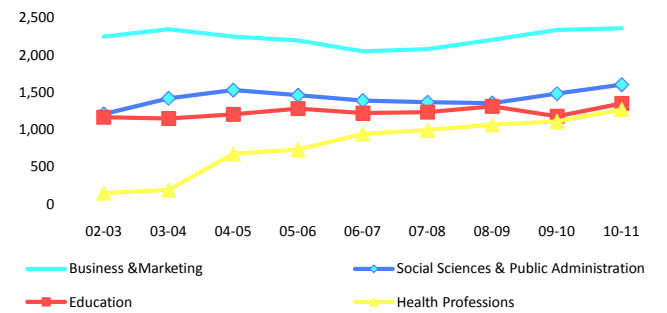
Source: A-1 Actuals

2010-11 USHE Degrees and Awards

	Cert.	Assoc.	Bacc.	Masters	Doct.	1st Prf	Total	1-yr %	5-yr %
UU	302	-	4,801	1,657	304	419	7,483	5.2%	3.5%
USU	71	860	3,232	862	111	6	5,142	6.2%	3.0%
WSU	57	1,798	2,029	261	-	-	4,145	0.5%	17.6%
SUU	20	359	979	420	-	-	1,778	10.5%	49.5%
SC	293	748	-	-	-	-	1,041	44.6%	26.0%
DSC	557	1,080	382	-	-	-	2,019	-3.3%	52.3%
UVU	85	1,809	2,276	18	-	-	4,188	12.0%	32.8%
SLCC	767	3,413	-	-	-	-	4,180	0.1%	39.0%
USHE	2,152	10,067	13,699	3,218	415	425	29,976	5.5%	18.7%

Cert=Certificate, Short-term certificates, other awards; 1st Prf=first professional, e.g. MD, JD, etc.
Source: 2012 USHE Data Book Tab B

Top Bachelors Degrees Awarded by USHE Academic Years 2003 - 2011



Degrees and Awards by Race/ Ethnicity and Institution

Institution	Non-Resident			Asian			Total Degrees Awarded
	Resident Alien	Black	American Indian	Pacific Islander	Hispanic	White	
UU	411	65	47	333	333	5882	412
USU	275	46	60	94	139	3999	529
WSU	18	38	28	103	4	2979	975
SUU	15	19	20	34	45	1600	45
Snow	20	4	12	14	26	949	16
DSC	5	19	20	38	91	1786	60
UVU	71	20	47	79	174	3724	73
SLCC	49	75	47	189	287	3268	265
USHE Total	864	286	281	884	1,099	24,187	2,375
Percent	3.4%	0.7%	0.8%	2.8%	3.6%	81.3%	7.3%