

Tab B – Degrees and Awards



UTAH SYSTEM OF
HIGHER EDUCATION

Building a Stronger State of Minds

Degrees and Awards Summary.....	1
TABLE 1	Five Year History of Degrees and Awards – Public and Private2
TABLE 2	Five Year History of Degrees – All Degrees & Associates Degrees3
TABLE 2	Five Year History of Degrees – Baccalaureate & Master’s Degrees 4
TABLE 2	Five Year History of Degrees – Doctorate & First Professional Degrees.....5
FIGURE 1	Total Degrees Awards – Public & Private Institutions.....5
TABLE 3	Types of Degrees and Awards 2010-11 6
FIGURE 2	Degrees Awards – Public Institutions 2010-116
TABLE 4	Degrees Awarded by Race/Ethnicity 7
TABLE 5	Degrees Awarded by Race/Ethnicity – All Degrees & Associate’s Degrees.....8
TABLE 5	Degrees Awarded by Race/Ethnicity – Baccalaureate & Master’s Degrees 9
TABLE 5	Degrees Awarded by Race/Ethnicity – Doctorate & First Professional Degrees 10
FIGURE 3	Degrees Awarded to Minority Students – Public & Private Institutions..... 10
TABLE 6	Degrees Awarded by Race/Ethnicity & Gender 11
TABLE 6	Degrees Awarded by Race/Ethnicity & Gender 12
TABLE 7	Two Year History of Degrees and Awards by Gender 13
FIGURE 4	Degrees Awarded by Gender 2009-10 & 2010-11 13
TABLE 8	Certificates by Field of Study..... 14
TABLE 8	Associate’s Degrees by Field of Study 15
TABLE 8	Bachelor’s Degrees by Field of Study..... 16

TABLE 8	Master’s Degrees by Field of Study.....	17
TABLE 8	Doctorate Degrees by Field of Study.....	18
TABLE 8	First Professional Degrees by Field of Study.....	18
TABLE 8	Total Degrees by Field of Study – Public Institutions.....	19
TABLE 9	Total Degrees awarded by Institution with Comparison Group.....	20

DEGREES AND AWARDS

Background

This tab includes all degrees and awards granted by nine of the public institutions in the Utah System of Higher Education, and for comparative information, degrees and awards of traditional non-public institutions: Brigham Young University, Westminster College, and LDS Business College. Not included in this tab are degrees and awards granted by other private or proprietary institutions.

Explanation of Attachments

Tables 1 through 4 array the number and types of degrees awarded in Utah in 2009-10 by institution and by degree type. Tables 5 through 7 provide the distribution of awards by the key demographic categories of gender and ethnicity. Table 8 provides degrees and awards data by program (USHE institutions only).

Degrees and Awards

Includes public institutions, BYU, LDS Business College, and Westminster College

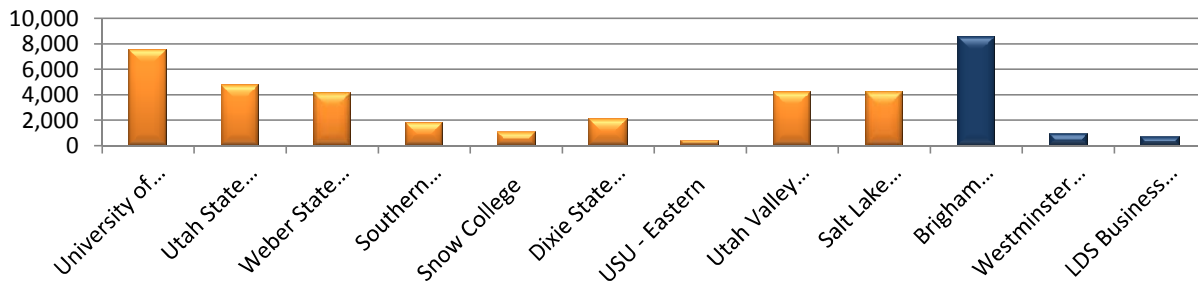
Fiscal-year data: 2010-11

At a glance:

- The number of degrees and awards has increased by 5.59% to 10,087 this past fiscal year.
- Bachelors degrees in business remain in top demand among students with social science, education, and health professions following. Communications edged out *Other* for fifth place in 2010-11
- Number of degrees attained is slightly higher for women (51%) compared to men (49%).
- Minorities earned 9.3% of the degrees continuing an upward trend.

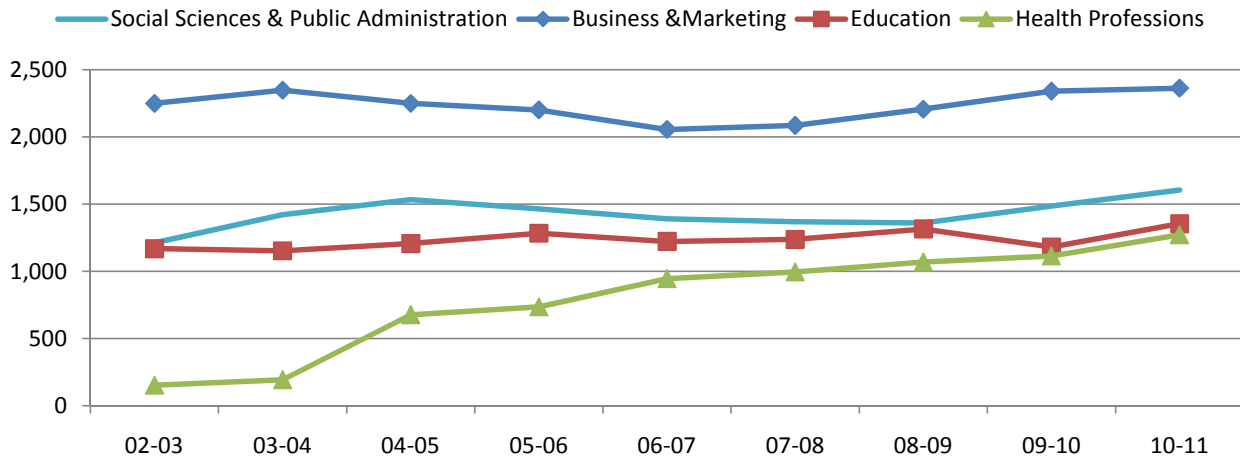
	Degrees and Awards	Change	% Increase
2010-11	40,087	2,123	5.59%
2009-10	37,964	1,374	3.76%
2008-09	36,590	692	1.93%
2007-08	35,898	875	2.50%
2006-07	35,023	118	0.34%
2005-06	34,905	816	2.39%

Total Degrees and Awards by Institution



Top Bachelors Degrees Awarded by USHE

Academic Years 2003 - 2011



⁽²⁾ Includes Library Science, Military Technologies, Multi/Interdisciplinary Studies, and Parks & Recreation.

TABLE 1

Five Year History of Degrees and Awards⁽¹⁾

By Public and Private Institutions in Utah

2006-07 through 2010-11

Degrees and Awards	2006-07	2007-08	2008-09	2009-10	2010-11	Change 2009-10 2010-11	% Change 2009-10 2010-11
Certificates < 1 Yr.							
Public Institutions	824	1,052	1,028	1,307	1,176	-131	-11.1%
Total	824	1,052	1,028	1,307	1,176	-131	-11.1%
Certificates > 1 Yr.⁽³⁾							
Public Institutions	781	815	811	917	976	59	6.0%
Private Institutions	221	226	264	296	314	18	5.7%
Total	1,002	1,041	1,075	1,213	1,290	77	6.0%
Associate's Degrees							
Public Institutions	8,446	8,549	8,988	9,602	10,067	465	4.6%
Private Institutions	271	303	344	326	446	120	26.9%
Total	8,717	8,852	9,332	9,928	10,513	585	5.6%
Baccalaureate Degrees							
Public Institutions	12,103	12,330	12,630	12,867	13,699	832	6.1%
Private Institutions	7,613	7,427	7,484	7,358	7,598	240	3.2%
Total	19,716	19,757	20,114	20,225	21,297	1,072	5.0%
Master's Degrees							
Public Institutions	2,554	2,920	2,760	2,990	3,218	228	7.1%
Private Institutions	1,274	1,282	1,285	1,368	1,512	144	9.5%
Total	3,828	4,202	4,045	4,358	4,730	372	7.9%
Doctorate Degrees							
Public Institutions	430	494	401	367	415	48	11.6%
Private Institutions	80	76	74	70	90	20	22.2%
Total	510	570	475	437	505	68	13.5%
First Prof. Degrees							
Public Institutions	277	270	372	358	425	67	15.8%
Private Institutions	149	154	149	138	151	13	8.6%
Total	426	424	521	496	576	80	13.9%
Total Degrees & Awards							
Public Institutions	25,415	26,430	26,990	28,408	29,976	1,568	5.2%
Private Institutions	9,608	9,468	9,600	9,556	10,111	555	5.5%
Grand Total	35,023	35,898	36,590	37,964	40,087	2,123	5.3%

Notes:

(1) Source: IPEDS Completions Surveys - Academic Years 2005-06 throughout 2009-10

(2) Private institutions include: BYU, Westminster, and LDS Business College.

(3) The category of "Certificates > 1 Yr." includes: Certificates and awards greater than one year but less than two years - below the baccalaureate level; Certificates and awards greater than two years but less than four years - below the baccalaureate level; Post-baccalaureate certificates and awards; Post-master's certificates and awards

TABLE 2 (page 1 of 3)

Five Year History of Degrees and Awards⁽¹⁾

By Public and Private Institutions in Utah

2006-07 through 2010-11

Degrees and Awards	2006-07	2007-08	2008-09	2009-10	2010-11	Change 2009-10 20010-11	% Change 2009-10 20010-11
All Degrees and Awards							
Public Institutions							
University of Utah	7,186	7,518	7,447	7,111	7,483	372	5.0%
Utah State University	3,942	4,338	4,260	4,459	4,736	277	5.8%
Weber State University	3,792	3,797	3,958	4,125	4,145	20	0.5%
Southern Utah University	1,250	1,356	1,550	1,609	1,778	169	9.5%
Snow College	742	659	643	720	1,041	321	30.8%
Dixie State College	1,317	1,471	1,616	2,087	2,019	-68	-3.4%
USU - Eastern	418	369	382	383	406	23	5.7%
Utah Valley University	3,287	3,275	3,441	3,739	4,188	449	10.7%
Salt Lake Community College ⁽³⁾	3,481	3,647	3,693	4,175	4,180	5	0.1%
Total Public	25,415	26,430	26,990	28,408	29,976	1,568	5.2%
Private Institutions⁽²⁾							
Brigham Young University	8,464	8,324	8,380	8,177	8,546	369	4.3%
Westminster College	691	657	691	873	900	27	3.0%
LDS Business College	453	487	529	506	665	159	23.9%
Total Private	9,608	9,468	9,600	9,556	10,111	555	5.5%
Total Public and Private	35,023	35,898	36,590	37,964	40,087	2,123	5.3%
Associate's Degrees							
Public Institutions							
Utah State University	262	376	493	485	505	20	4.0%
Weber State University	1,630	1,677	1,851	1,850	1,798	-52	-2.9%
Southern Utah University	168	209	323	317	359	42	11.7%
Snow College	676	616	589	653	748	95	12.7%
Dixie State College	864	741	778	894	1,080	186	17.2%
USU - Eastern	373	312	302	330	355	25	7.0%
Utah Valley University	1,781	1,716	1,651	1,689	1,809	120	6.6%
Salt Lake Community College	2,692	2,902	3,001	3,384	3,413	29	0.8%
Total Public	8,446	8,549	8,988	9,602	10,067	465	4.6%
Private Institutions							
LDS Business College	271	303	344	326	446	120	26.9%
Total Private	271	303	344	326	446	120	26.9%
Total Public and Private	8,717	8,852	9,332	9,928	10,513	585	5.6%

Notes:

⁽¹⁾ Source: IPEDS Completions Surveys - Academic Years 2006-07 throughout 2010-11⁽²⁾ Private institutions include: BYU, Westminster, and LDS Business College.⁽³⁾ SLCC Awards and Degrees include Skills Center Data as of 2006-07

TABLE 2 (page 2 of 3)

Five Year History of Degrees and Awards⁽¹⁾

By Public and Private Institutions in Utah

2006-07 through 2010-11

Degrees and Awards	2006-07	2007-08	2008-09	2009-10	2010-11	Change 2009-10 2010-11	% Change 2009-10 2010-11
Baccalaureate Degrees							
Public Institutions							
University of Utah	4,829	4,882	4,896	4,622	4,801	179	3.7%
Utah State University	2,853	3,005	2,968	3,040	3,232	192	5.9%
Weber State University	1,940	1,881	1,872	1,980	2,029	49	2.4%
Southern Utah University	886	880	909	927	979	52	5.3%
Dixie State College	134	150	213	318	382	64	16.8%
Utah Valley University	1,479	1,532	1,772	1,980	2,276	296	13.0%
Total Public	12,121	12,330	12,630	12,867	13,699	832	6.1%
Private Institutions⁽²⁾							
Brigham Young University	7,142	6,995	7,037	6,870	7,097	227	3.2%
Westminster College	471	432	447	488	501	13	2.6%
Total Private	7,613	7,427	7,484	7,358	7,598	240	3.2%
Total Public and Private	19,734	19,757	20,114	20,225	21,297	1,072	5.0%
Master's Degrees							
Public Institutions							
University of Utah	1,441	1,611	1,563	1,565	1,657	92	5.6%
Utah State University	738	852	696	831	862	31	3.6%
Weber State University	171	195	194	231	261	30	11.5%
Southern Utah University	204	262	307	352	420	68	16.2%
Utah Valley University				11	18	7	38.9%
Total Public	2,554	2,920	2,760	2,990	3,218	228	7.1%
Private Institutions							
Brigham Young University	1,075	1,079	1,086	1,070	1,185	115	9.7%
Westminster College	199	203	199	298	327	29	8.9%
Total Private	1,274	1,282	1,285	1,368	1,512	144	9.5%
Total Public and Private	3,828	4,202	4,045	4,358	4,730	372	7.9%

Notes:⁽¹⁾ Source: IPEDS Completions Surveys - Academic Years 2006-07 throughout 2010-11⁽²⁾ Private institutions include: BYU, Westminster, and LDS Business College.

TABLE 2 (page 3 of 3)

Five Year History of Degrees and Awards⁽¹⁾

By Public and Private Institutions in Utah
2006-07 through 2010-11

Degrees and Awards	2006-07	2007-08	2008-09	2009-10	2010-11	Change 2009-10 2010-11	% Change 2009-10 2010-11
Doctorate Degrees							
Public Institutions							
University of Utah	345	397	313	279	304	25	8.2%
Utah State University	85	97	88	88	111	23	20.7%
Total Public	430	494	401	367	415	48	11.6%
Private Institutions⁽²⁾							
Brigham Young University	80	76	74	70	90	20	22.2%
Total Private	80	76	74	70	90	20	22.2%
Total Public and Private	510	570	475	437	505	68	13.5%
First Professional Degrees							
Public Institutions							
University of Utah	277	270	372	353	419	66	15.8%
Utah State University				5	6	1	16.7%
Total Public	277	270	372	358	425	67	15.8%
Private Institutions							
Brigham Young University	149	154	149	138	151	13	8.6%
Total Private	149	154	149	138	151	13	8.6%
Total Public and Private	426	424	521	496	576	80	13.9%

Notes:

⁽¹⁾ Source: IPEDS Completions Surveys - Academic Years 2006-07 throughout 2010-11

⁽²⁾ Private institutions include: BYU, Westminster, and LDS Business College.

Source: Table 2, p. 1 of 3, All Degrees and Awards

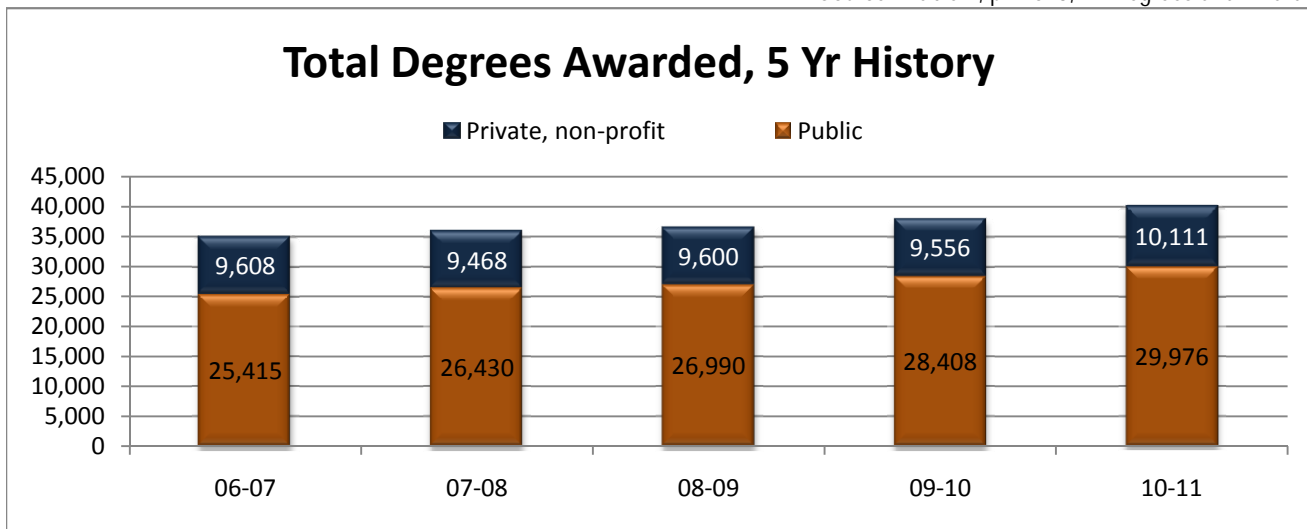


TABLE 3

Types of Degrees and Awards⁽¹⁾

By Public and Private Institutions in Utah

Academic Year 2010-11

Institutions	Certificates Less Than One Year	Certificates Greater than One Year ⁽⁴⁾	Associate's Degrees	Bachelor's Degrees	Master's Degrees	Doctor's Degrees	First Professional Degrees	Total Degrees Awarded
All Degrees and Awards								
Public Institutions								
University of Utah	0	302	0	4,801	1,657	304	419	7,483
Utah State University	0	20	505	3,232	862	111	6	4,736
Weber State University	57	0	1,798	2,029	261	0	0	4,145
Southern Utah University	13	7	359	979	420	0	0	1,778
Snow College	237	56	748	0	0	0	0	1,041
Dixie State College	469	88	1,080	382	0	0	0	2,019
USU - Eastern	0	51	355	0	0	0	0	406
Utah Valley University	2	83	1,809	2,276	18	0	0	4,188
Salt Lake Community College	398	369	3,413	0	0	0	0	4,180
Total Public	1,176	976	10,067	13,699	3,218	415	425	29,976
Private Institutions⁽²⁾								
Brigham Young University	0	23	0	7,097	1,185	90	151	8,546
Westminster College	0	72	0	501	327	0	0	900
LDS Business College	219	0	446	0	0	0	0	665
Total Private	219	95	446	7,598	1,512	90	151	10,111
Total Public and Private	1,395	1,071	10,513	21,297	4,730	505	576	40,087

Notes:

- (1) Source: IPEDS Completions Surveys - Academic Year 2010-11
- (2) Private institutions include: BYU, Westminster, and LDS Business College.
- (3) SLCC Awards and Degrees include Skills Center Data as of 2006-07
- (4) Includes Post-Baccalaureate and Post Masters Certificates

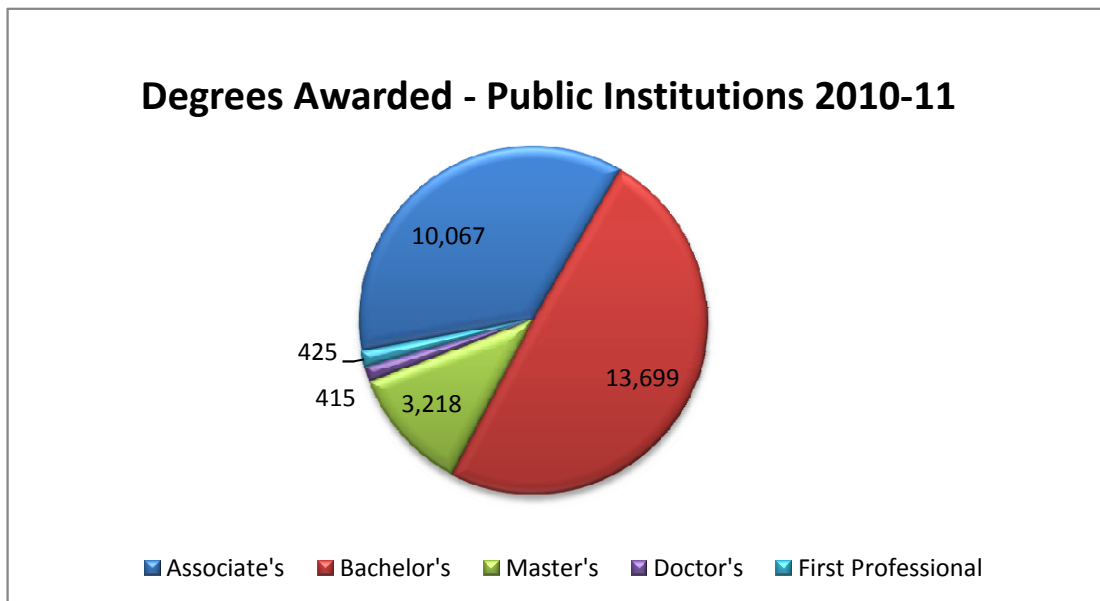


TABLE 4

Degrees and Awards By Race/Ethnicity⁽¹⁾

Public and Private Institutions in Utah

Academic Year 2010-11

Degrees and Awards	Non-resident Alien	Black, Non-Hispanic	American Indian or Alaskan Native	Asian	Pacific Islander	Hispanic	White, Non-Hispanic	Multiple Races Non-Hispanic	Race/Ethnicity Unknown	Total Degrees Awarded
Certificates < 1 Yr.										
Public Institutions	6	21	24	35	15	108	899	3	65	1,176
Private Institutions ⁽²⁾	0	0	0	0	0	0	0	0	0	0
Total	6	21	24	35	15	108	899	3	65	1,176
Certificates > 1 Yr.⁽³⁾										
Public Institutions	10	12	24	32	6	65	760	1	66	976
Private Institutions	70	3	2	5	0	16	211	0	7	314
Total	80	15	26	37	6	81	971	1	73	1,290
Associate's Degrees										
Public Institutions	109	96	112	190	87	373	8333	18	749	10,067
Private Institutions	91	6	1	8	2	32	305	0	1	446
Total	200	102	113	198	89	405	8,638	18	750	10,513
Baccalaureate Degrees										
Public Institutions	340	134	103	354	50	439	11081	41	1157	13,699
Private Institutions	199	38	27	125	36	357	6414	255	147	7,598
Total	539	172	130	479	86	796	17,495	296	1,304	21,297
Master's Degrees										
Public Institutions	276	17	14	69	17	91	2542	16	176	3,218
Private Institutions	75	7	4	39	12	61	1264	18	32	1,512
Total	351	24	18	108	29	152	3,806	34	208	4,730
Doctorate Degrees										
Public Institutions	121	3	1	10	0	7	237	2	34	415
Private Institutions	14	1	0	9	3	3	46	0	14	90
Total	135	4	1	19	3	10	283	2	48	505
First Prof. Degrees										
Public Institutions	2	3	3	17	2	16	335	0	47	425
Private Institutions	0	4	0	5	3	9	120	5	5	151
Total	2	7	3	22	5	25	455	5	52	576
Total Degrees & Awards										
Public Institutions	864	286	281	707	177	1,099	24,187	81	2,294	29,976
Private Institutions	449	59	34	191	56	478	8,360	278	206	10,111
Grand Total	1,313	345	315	898	233	1,577	32,547	359	2,500	40,087

Notes:

⁽¹⁾ Source: IPEDS Completions Surveys - Academic Year 2010-11⁽²⁾ Private institutions include: BYU, Westminster, and LDS Business College.⁽³⁾ The category of "certificates > 1 Yr." includes: Certificates and awards greater than one year but less than two years - below the baccalaureate level; Certificates and awards greater than two years but less than four years - below the baccalaureate level; Post-baccalaureate certificates and awards; Post-master's certificates and awards

TABLE 5 (page 1 of 3)

Degrees and Awards by Race/Ethnicity⁽¹⁾

Public and Private Institutions in Utah

Academic Year 2010-11

Institutions	Non-resident Alien	Black, Non-Hispanic	American Indian or Alaskan Native	Asian	Pacific Islander	Hispanic	White, Non-Hispanic	Multiple Races Non-Hispanic	Race/Ethnicity Unknown	Total Degrees Awarded
All Degrees and Awards										
Public Institutions										
University of Utah	411	65	47	311	22	333	5,882	45	367	7,483
Utah State University	275	38	21	60	13	130	3,686	14	499	4,736
Weber State University	18	38	28	97	6	4	2,979	6	969	4,145
Southern Utah University	15	19	20	14	20	45	1,600	0	45	1,778
Snow College	20	4	12	2	12	26	949	8	8	1,041
Dixie State College	5	19	20	21	17	91	1,786	8	52	2,019
USU - Eastern	0	8	39	19	2	9	313	0	16	406
Utah Valley University	71	20	47	46	33	174	3,724	0	73	4,188
Salt Lake Community College	49	75	47	137	52	287	3,268	0	265	4,180
Total Public	864	286	281	707	177	1,099	24,187	81	2,294	29,976
Percent	2.9%	1.0%	0.9%	2.4%	0.6%	3.7%	80.7%	0.3%	7.7%	100%
Private Institutions⁽²⁾										
Brigham Young University	287	47	29	149	53	382	7,171	276	152	8,546
Westminster College	8	4	2	33	1	51	748	2	51	900
LDS Business College	154	8	3	9	2	45	441	0	3	665
Total Private	449	59	34	191	56	478	8,360	278	206	10,111
Percent	4.4%	0.6%	0.3%	1.9%	0.6%	4.7%	82.7%	2.7%	2.0%	100%
Total Public and Private	1,313	345	315	898	233	1,577	32,547	359	2,500	40,087
Percent	3.3%	0.9%	0.8%	2.2%	0.6%	3.9%	81.2%	0.9%	6.2%	100%
Associate's Degrees										
Public Institutions										
Utah State University	6	1	2	3	1	20	409	2	61	505
Weber State University	3	17	15	39	3	3	1,316	4	398	1,798
Southern Utah University	0	2	5	2	5	11	325	0	9	359
Snow College	20	3	4	1	11	10	686	8	5	748
Dixie State College	3	9	11	14	9	37	973	4	20	1,080
USU - Eastern	0	7	34	19	2	9	270	0	14	355
Utah Valley University	33	5	18	19	16	82	1,599	0	37	1,809
Salt Lake Community College	44	52	23	93	40	201	2,755	0	205	3,413
Total Public	109	96	112	190	87	373	8,333	18	749	10,067
Percent	1.1%	1.0%	1.1%	1.9%	0.9%	3.7%	82.8%	0.2%	7.4%	100%
Private Institutions										
LDS Business College	91	6	1	8	2	32	305	0	1	446
Total Private	91	6	1	8	2	32	305	0	1	446
Percent	20.4%	1.3%	0.2%	1.8%	0.4%	7.2%	68.4%	0.0%	0.2%	100%
Total Public and Private	200	102	113	198	89	405	8,638	18	750	10,513
Percent	1.9%	1.0%	1.1%	1.9%	0.8%	3.9%	82.2%	0.2%	7.1%	100%

Notes:

⁽¹⁾ Source: IPEDS Completions Surveys - Academic Year 2010-11⁽²⁾ Private institutions include: BYU, Westminster, and LDS Business College.

TABLE 5 (page 2 of 3)

Degrees and Awards by Race/Ethnicity⁽¹⁾

Public and Private Institutions in Utah

Academic Year 2010-11

Institutions	Non-resident Alien	Black, Non-Hispanic	American Indian or Alaskan Native	Asian	Pacific Islander	Hispanic	White, Non-Hispanic	Multiple Races Non-Hispanic	Race/Ethnicity Unknown	Total Degrees Awarded
Baccalaureate Degrees										
Public Institutions										
University of Utah	129	48	30	224	13	233	3,891	29	204	4,801
Utah State University	148	35	17	39	10	86	2,507	9	381	3,232
Weber State University	13	21	13	52	3	0	1,423	2	502	2,029
Southern Utah University	12	11	12	8	9	27	874	0	26	979
Dixie State College	1	4	3	4	0	10	349	1	10	382
Utah Valley University	37	15	28	27	15	83	2,037	0	34	2,276
Total Public	340	134	103	354	50	439	11,081	41	1,157	13,699
Percent	2.5%	1.0%	0.8%	2.6%	0.4%	3.2%	80.9%	0.3%	8.4%	100%
Private Institutions⁽²⁾										
Brigham Young University	195	35	26	105	36	319	6,011	253	117	7,097
Westminster College	4	3	1	20	0	38	403	2	30	501
Total Private	199	38	27	125	36	357	6,414	255	147	7,598
Percent	2.6%	0.5%	0.4%	1.6%	0.5%	4.7%	84.4%	3.4%	1.9%	100%
Total Public and Private	539	172	130	479	86	796	17,495	296	1,304	21,297
Percent	2.5%	0.8%	0.6%	2.2%	0.4%	3.7%	82.1%	1.4%	6.1%	100%
Master's Degrees										
Public Institutions										
University of Utah	190	9	11	44	7	59	1,263	13	61	1,657
Utah State University	82	2	2	17	2	22	684	3	48	862
Weber State University	2	0	0	4	0	1	195	0	59	261
Southern Utah University	2	6	1	4	6	7	386	0	8	420
Utah Valley University	0	0	0	0	2	2	14	0	0	18
Total Public	276	17	14	69	17	91	2,542	16	176	3,218
Percent	8.6%	0.5%	0.4%	2.1%	0.5%	2.8%	79.0%	0.5%	5.5%	100.0%
Private Institutions										
Brigham Young University	71	7	3	27	11	50	982	18	16	1,185
Westminster College	4	0	1	12	1	11	282	0	16	327
Total Private	75	7	4	39	12	61	1,264	18	32	1,512
Percent	5.0%	0.5%	0.3%	2.6%	0.8%	4.0%	83.6%	1.2%	2.1%	100%
Total Public and Private	351	24	18	108	29	152	3,806	34	208	4,730
Percent	7.4%	0.5%	0.4%	2.3%	0.6%	3.2%	80.5%	0.7%	4.4%	100%

Notes:

⁽¹⁾ Source: IPEDS Completions Surveys - Academic Year 2010-11

⁽²⁾ Private institutions include: BYU, Westminster, and LDS Business College.

TABLE 5 (page 3 of 3)

Degrees and Awards by Race/Ethnicity⁽¹⁾

Public and Private Institutions in Utah

Academic Year 2010-11

Institutions	Non-resident Alien	Black, Non-Hispanic	American Indian or Alaskan Native	Asian	Pacific Islander	Hispanic	White, Non-Hispanic	Multiple Races Non-Hispanic	Race/Ethnicity Unknown	Total Degrees Awarded
--------------	--------------------	---------------------	-----------------------------------	-------	------------------	----------	---------------------	-----------------------------	------------------------	-----------------------

Doctorate Degrees

Public Institutions

University of Utah	82	3	1	9	0	5	174	2	28	304
Utah State University	39	0	0	1	0	2	63	0	6	111
Total Public	121	3	1	10	0	7	237	2	34	415
Percent	29.2%	0.7%	0.2%	2.4%	0.0%	1.7%	57.1%	0.5%	8.2%	100%

Private Institutions⁽²⁾

Brigham Young University	14	1	0	9	3	3	46	0	14	90
Total Private	14	1	0	9	3	3	46	0	14	90
Percent	15.6%	1.1%	0.0%	10.0%	3.3%	3.3%	51.1%	0.0%	15.6%	100%
Total Public and Private	135	4	1	19	3	10	283	2	48	505
Percent	26.7%	0.8%	0.2%	3.8%	0.6%	2.0%	56.0%	0.4%	9.5%	100%

First Professional Degrees

Public Institutions

University of Utah	2	3	3	17	2	16	330	0	46	419
Utah State University	0	0	0	0	0	0	5	0	1	6
Total Public	2	3	3	17	2	16	335	0	47	425
Percent	0.5%	0.7%	0.7%	4.0%	0.5%	3.8%	78.8%	0.0%	11.1%	100%

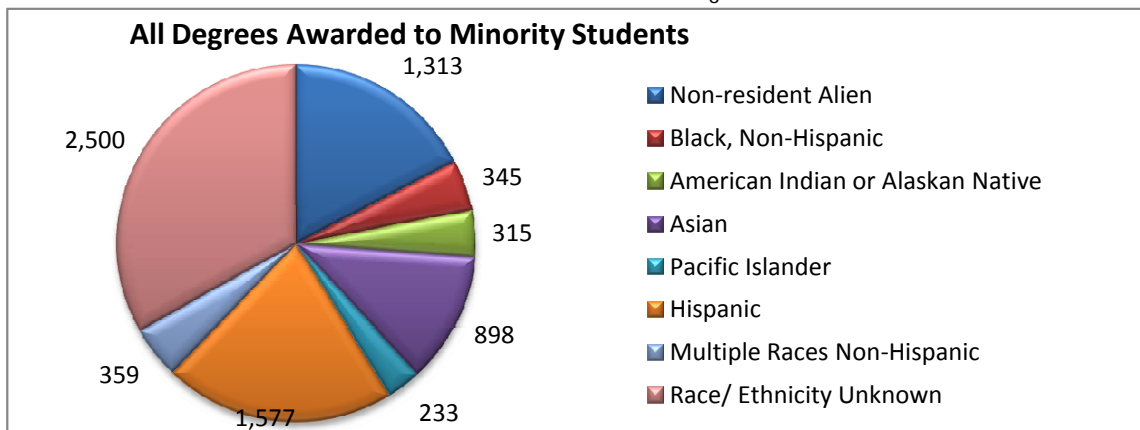
Private Institutions

Brigham Young University	0	4	0	5	3	9	120	5	5	151
Total Private	0	4	0	5	3	9	120	5	5	151
Percent	0.0%	2.6%	0.0%	3.3%	2.0%	6.0%	79.5%	3.3%	3.3%	100%
Total Public and Private	2	7	3	22	5	25	455	5	52	576
Percent	0.3%	1.2%	0.5%	3.8%	0.9%	4.3%	79.0%	0.9%	9.0%	100%

Notes:

⁽¹⁾ Source: IPEDS Completions Surveys - Academic Year 2010-11

⁽²⁾ Private institutions include: BYU, Westminster, and LDS Business College.



Source: Table 5, p. 1 of 3, All Degrees and Awards

TABLE 6 (page 1 of 2)

Degrees and Awards by Race/Ethnicity and Gender⁽¹⁾

Public and Private Institutions in Utah

Academic Year 2009-10

Institutions by Gender	Non-resident Alien	Black, Non-Hispanic	American Indian or Alaskan Native	Asian	Pacific Islander	Hispanic	White, Non-Hispanic	Multiple Races Non-Hispanic	Race/Ethnicity Unknown	Total Degrees Awarded
All Degrees and Awards										
Public Institutions										
University of Utah										
Male	244	41	20	143	15	136	3245	22	184	4,050
Female	167	24	27	168	7	197	2637	23	183	3,433
Total	411	65	47	311	22	333	5,882	45	367	7,483
Utah State University										
Male	166	24	11	25	7	53	1768	3	255	2,312
Female	109	14	10	35	6	77	1918	11	244	2,424
Total	275	38	21	60	13	130	3,686	14	499	4,736
Weber State University										
Male	8	20	12	43	3	0	1330	3	450	1,869
Female	10	18	16	54	3	4	1649	3	519	2,276
Total	18	38	28	97	6	4	2,979	6	969	4,145
Southern Utah University										
Male	8	9	8	4	12	16	637	0	27	721
Female	7	10	12	10	8	29	963	0	18	1,057
Total	15	19	20	14	20	45	1,600	0	45	1,778
Snow College										
Male	10	2	3	0	6	8	312	0	1	342
Female	10	2	9	2	6	18	637	8	7	699
Total	20	4	12	2	12	26	949	8	8	1,041
Dixie State College										
Male	2	10	8	9	8	36	786	3	23	885
Female	3	9	12	12	9	55	1000	5	29	1,134
Total	5	19	20	21	17	91	1,786	8	52	2,019
USU - Eastern										
Male	0	6	9	7	0	0	135	0	9	166
Female	0	2	30	12	2	9	178	0	7	240
Total	0	8	39	19	2	9	313	0	16	406

Notes:

⁽¹⁾ Source: IPEDS Completions Surveys - Academic Year 2009-10

⁽²⁾ Private institutions include: BYU, Westminster, and LDS Business College.

TABLE 6 (page 2 of 2)

Degrees and Awards by Race/Ethnicity and Gender⁽¹⁾

Public and Private Institutions in Utah

Academic Year 2009-10

Institutions by Gender	Non-resident Alien	Black, Non-Hispanic	American Indian or Alaskan Native	Asian	Pacific Islander	Hispanic	White, Non-Hispanic	Multiple Races Non-Hispanic	Race/Ethnicity Unknown	Total Degrees Awarded
Utah Valley University										
Male	32	16	29	23	11	95	2085	0	48	2,339
Female	39	4	18	23	22	79	1639	0	25	1,849
Total	71	20	47	46	33	174	3,724	0	73	4,188
Salt Lake Community College										
Male	13	39	18	72	21	116	1504	0	131	1,914
Female	36	36	29	65	31	171	1764	0	134	2,266
Total	49	75	47	137	52	287	3,268	0	265	4,180
Total Public Male	483	167	118	326	83	460	11,802	31	1,128	14,598
Total Public Female	381	119	163	381	94	639	12,385	50	1,166	15,378
Total	864	286	281	707	177	1,099	24,187	81	2,294	29,976
Percent	2.9%	1.0%	0.9%	2.4%	0.6%	3.7%	80.7%	0.3%	7.7%	100%
Private Institutions ⁽²⁾										
Brigham Young University										
Male	161	27	11	70	38	186	3820	83	76	4,472
Female	126	20	18	79	15	196	3351	193	76	4,074
Total	287	47	29	149	53	382	7,171	276	152	8,546
Westminster College										
Male	2	1	0	16	0	15	341	0	25	400
Female	6	3	2	17	1	36	407	2	26	500
Total	8	4	2	33	1	51	748	2	51	900
LDS Business College										
Male	73	7	3	3	1	19	236	0	0	342
Female	81	1	0	6	1	26	205	0	3	323
Total	154	8	3	9	2	45	441	0	3	665
Total Private Male	236	35	14	89	39	220	4,397	83	101	5,214
Total Private Female	213	24	20	102	17	258	3,963	195	105	4,897
Grand Total Male	719	202	132	415	122	680	16,199	114	1,229	19,812
Grand Total Female	594	143	183	483	111	897	16,348	245	1,271	20,275
Total	1,313	345	315	898	233	1,577	32,547	359	2,500	40,087
Percent	3.3%	0.9%	0.8%	2.2%	0.6%	3.9%	81.2%	0.9%	6.2%	100.0%

Notes:

⁽¹⁾ Source: IPEDS Completions Surveys - Academic Year 2009-10⁽²⁾ Private institutions include: BYU, Westminster, and LDS Business College.

TABLE 7

Two Year History of Degrees and Awards by Gender⁽¹⁾

Public and Private Institutions in Utah

For 2009-10 and 2010-11

Institutions	2009-10			2010-11			1-Year % Change		
	Male	Female	Total	Male	Female	Total	Male	Female	Total
Public Institutions									
University of Utah	3,874	3,237	7,111	4,050	3,433	7,483	4.54%	6.05%	5.23%
Utah State University	2,252	2,207	4,459	2,312	2,424	4,736	2.66%	9.83%	6.21%
Weber State University	1,923	2,202	4,125	1,869	2,276	4,145	-2.81%	3.36%	0.48%
Southern Utah University	637	972	1,609	721	1,057	1,778	13.19%	8.74%	10.50%
Snow College	289	431	720	342	699	1,041	18.34%	62.18%	44.58%
Dixie State College	848	1,239	2,087	885	1,134	2,019	4.36%	-8.47%	-3.26%
USU - Eastern	133	250	383	166	240	406	24.81%	-4.00%	6.01%
Utah Valley University	2,082	1,657	3,739	2,339	1,849	4,188	12.34%	11.59%	12.01%
Salt Lake Community College	1,936	2,239	4,175	1,914	2,266	4,180	-1.14%	1.21%	0.12%
Total Public	13,974	14,434	28,408	14,598	15,378	29,976	4.47%	6.54%	5.52%
Private Institutions⁽²⁾									
Brigham Young University	4,358	3,819	8,177	4,472	4,074	8,546	2.62%	6.68%	4.51%
Westminster College	447	426	873	400	500	900	-10.51%	17.37%	3.09%
LDS Business College	270	236	506	342	323	665	26.67%	36.86%	31.42%
Total Private	5,075	4,481	9,556	5,214	4,897	10,111	2.74%	9.28%	5.81%
Total Public and Private	19,049	18,915	37,964	19,812	20,275	40,087	4.01%	7.19%	5.59%

Notes:

(1) Source: IPEDS Completions Surveys - Academic Years 2009-10 and 2010-11

(2) Private institutions include: BYU, Westminster, and LDS Business College.

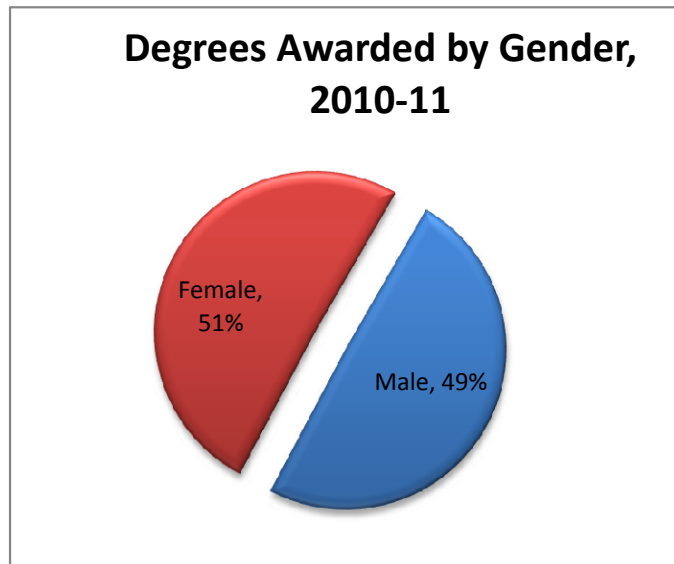
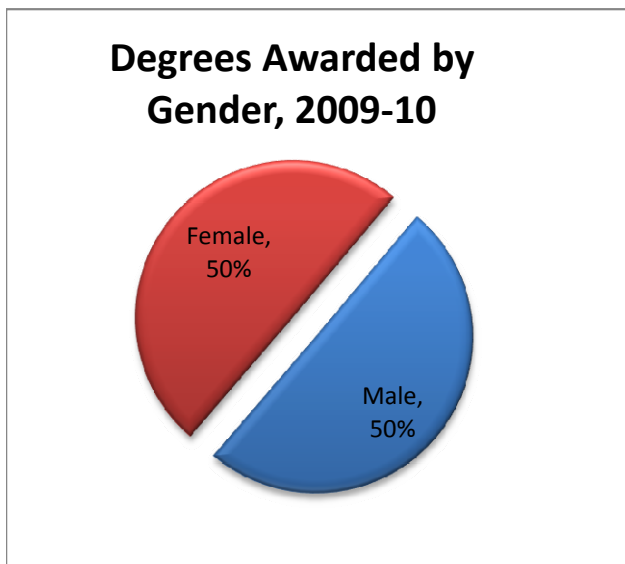


TABLE 8 (page 1 of 6)

Certificates ⁽¹⁾

Public Institutions in Utah
2009-10 Compared to 2010-11

Field of Study	UU		USU		WSU		SUU		SNOW	
	2009-10	2010-11	2009-10	2010-11	2009-10	2010-11	2009-10	2010-11	2009-10	2010-11
Agriculture & Natural Resources	1	0	2	11	0	0	0	0	0	0
Architecture & Related Studies	0	0	0	0	0	0	0	0	0	0
Area, Ethnic & Cultural Studies	0	0	0	0	0	0	0	0	0	0
Biological Sciences/Life Sciences	0	0	0	0	0	0	0	0	0	0
Business & Marketing	2	1	0	0	14	10	0	0	29	18
Communications	0	0	0	0	0	0	0	0	0	0
Computer & Info Sciences	0	0	0	0	7	3	0	0	0	0
Education	27	24	1	3	0	0	0	0	0	0
Engineering & Related Technologies	9	6	0	0	0	0	2	8	0	0
English Language & Literature	0	0	0	0	0	0	1	0	0	0
Family and consumer sciences	0	1	0	0	0	0	0	0	1	0
Foreign Languages	0	0	0	0	0	0	0	0	0	0
Health Professions	3	15	0	0	39	42	0	0	37	275
History	0	0	0	0	0	0	0	0	0	0
Law & Legal Studies	8	11	0	0	0	0	0	0	0	0
Liberal Arts & Sciences/Gen. Studies	67	60	0	0	0	0	0	0	0	0
Mathematics & Statistics	0	0	0	0	0	0	0	0	0	0
Other ⁽²⁾	46	27	0	0	0	1	0	0	0	0
Other Vocational Studies ⁽³⁾	0	0	0	0	0	0	0	0	0	0
Philosophy	0	0	0	0	0	0	0	0	0	0
Physical Sciences & Science Tech.	0	0	0	0	0	0	0	0	0	0
Psychology	5	10	7	6	0	0	0	0	0	0
Social Sciences & Public Admin.	113	143	0	0	4	1	10	12	0	0
Visual & Performing Arts	11	4	0	0	0	0	0	0	0	0
Total Degrees Awarded	292	302	10	20	64	57	13	20	67	293

Field of Study	DSC		USU-Eastern		UVU		SLCC		USHE TOTAL	
	2009-10	2010-11	2009-10	2010-11	2009-10	2010-11	2009-10	2010-11	2009-10	2010-11
Agriculture & Natural Resources	0	0	0	0	0	0	0	0	3	11
Architecture & Related Studies	0	0	0	0	0	0	0	0	0	0
Area, Ethnic & Cultural Studies	0	0	0	0	0	0	0	0	0	0
Biological Sciences/Life Sciences	0	0	0	0	0	0	1	1	1	1
Business & Marketing	0	3	2	2	4	2	69	51	120	87
Communications	1	0	0	0	0	0	1	2	2	2
Computer & Info Sciences	1	15	0	1	2	6	32	32	42	57
Education	0	0	1	0	10	3	0	0	39	30
Engineering & Related Technologies	0	0	4	4	2	1	20	11	37	30
English Language & Literature	0	0	0	0	0	0	0	1	1	1
Family and consumer sciences	0	0	0	0	0	0	0	0	1	1
Foreign Languages	0	0	0	0	0	0	0	0	0	0
Health Professions	869	516	44	38	6	3	379	459	1,377	1,348
History	0	0	0	0	0	0	0	0	0	0
Law & Legal Studies	0	0	0	0	29	0	0	0	37	11
Liberal Arts & Sciences/Gen. Studies	0	0	0	2	0	0	0	0	67	62
Mathematics & Statistics	0	0	0	0	0	0	0	0	0	0
Other ⁽²⁾	0	0	0	0	0	0	0	0	46	28
Other Vocational Studies ⁽³⁾	4	23	1	4	4	68	280	204	289	299
Philosophy	0	0	0	0	0	0	0	0	0	0
Physical Sciences & Science Tech.	0	0	0	0	0	0	0	0	0	0
Psychology	0	0	0	0	0	0	0	0	12	16
Social Sciences & Public Admin.	0	0	0	0	0	0	4	2	131	158
Visual & Performing Arts	0	0	1	0	2	2	5	4	19	10
Total Degrees Awarded	875	557	53	51	59	85	791	767	2,224	2,152

Notes:

⁽¹⁾ Source: IPEDS Completions Surveys - Academic Years 2009-10 and 2010-11

⁽²⁾ Includes Library Science, Military Technologies, Multi/Interdisciplinary Studies, and Parks & Recreation.

⁽³⁾ Includes Personal Services, Vocational Home Economics, Protective Services, Construction Trades, Mechanics & Repairers, Precision Production Trades, Transportation & Materials Moving.

The category of "Certificates: Certificates and awards greater than one year but less than two years - below the baccalaureate level; Certificates and awards greater than two years but less than four years - below the baccalaureate level; Post-baccalaureate certificates and awards: Post-master's certificates and awards

TABLE 8 (page 2 of 6)

Associate's Degrees ⁽¹⁾

Public Institutions in Utah
2009-10 Compared to 2010-11

Field of Study	USU		WSU		SUU		SNOW		DSC	
	2009-10	2010-11	2009-10	2010-11	2009-10	2010-11	2009-10	2010-11	2009-10	2010-11
Agriculture & Natural Resources	6	21	0	0	1	1	4	6	0	0
Architecture & Related Studies	0	0	0	0	0	0	1	0	0	0
Area, Ethnic & Cultural Studies	0	0	0	0	0	0	0	0	0	0
Biological Sciences/Life Sciences	0	0	0	0	0	0	9	10	0	0
Business & Marketing	0	14	7	17	0	0	53	50	62	68
Communications	0	0	0	0	0	0	14	20	0	0
Computer & Info Sciences	0	0	38	42	0	0	11	6	0	0
Education	0	0	0	0	0	0	69	69	1	0
Engineering & Related Technologies	0	7	44	47	9	10	27	23	4	2
English Language & Literature	0	0	0	0	0	0	10	14	0	0
Family & Consumer Science	0	0	1	1	1	2	6	9	0	0
Foreign Languages	0	0	0	0	0	0	4	2	0	0
Health Professions	0	0	621	611	0	0	65	111	123	140
History	0	0	0	0	0	0	2	6	0	0
Law & Legal Studies	0	0	11	0	4	1	6	2	7	0
Liberal Arts & Sciences/Gen. Studies	479	463	1,068	1,044	298	340	266	267	695	861
Mathematics & Statistics	0	0	0	0	0	0	1	6	0	0
Other ⁽²⁾	0	0	0	0	0	0	4	7	0	0
Other Vocational Studies ⁽³⁾	0	0	40	25	4	5	21	35	2	9
Philosophy	0	0	0	0	0	0	0	0	0	0
Physical Sciences & Science Tech.	0	0	7	4	0	0	4	3	0	0
Psychology	0	0	0	0	0	0	9	27	0	0
Social Sciences & Public Admin.	0	0	0	0	0	0	16	17	0	0
Visual & Performing Arts	0	0	13	7	0	0	51	58	0	0
Total Degrees Awarded	485	505	1,850	1,798	317	359	653	748	894	1,080

Field of Study	USU-Eastern		UVU		SLCC		USHE TOTAL	
	2009-10	2010-11	2009-10	2010-11	2009-10	2010-11	2009-10	2010-11
Agriculture & Natural Resources	0	0	0	0	0	1	11	29
Architecture & Related Studies	0	0	0	0	0	0	1	0
Area, Ethnic & Cultural Studies	0	1	0	0	0	0	0	1
Biological Sciences/Life Sciences	0	0	3	4	11	9	23	23
Business & Marketing	3	18	93	103	312	280	530	550
Communications	0	0	10	2	41	36	58	58
Computer & Info Sciences	0	0	19	27	39	40	107	115
Education	0	0	32	34	21	29	123	132
Engineering & Related Technologies	6	4	73	89	128	118	291	300
English Language & Literature	0	0	10	9	30	22	50	45
Family & Consumer Science	5	0	0	0	2	0	15	12
Foreign Languages	2	0	0	0	12	13	18	15
Health Professions	50	41	93	123	478	443	1,430	1,469
History	0	0	13	13	14	21	29	40
Law & Legal Studies	11	0	90	12	92	36	221	51
Liberal Arts & Sciences/Gen. Studies	236	265	953	985	1,772	1,812	5,767	6,037
Mathematics & Statistics	0	0	6	7	3	6	10	19
Other ⁽²⁾	0	0	24	45	21	12	49	64
Other Vocational Studies ⁽³⁾	15	26	155	226	157	263	394	589
Philosophy	0	0	1	0	0	0	1	0
Physical Sciences & Science Tech.	0	0	0	0	45	45	56	52
Psychology	0	0	71	96	54	73	134	196
Social Sciences & Public Admin.	0	0	0	0	106	107	122	124
Visual & Performing Arts	2	0	43	34	46	47	155	146
Total Degrees Awarded	330	355	1,689	1,809	3,384	3,413	9,602	10,067

Notes:

⁽¹⁾ Source: IPEDS Completions Surveys - Academic Years 2009-10 and 2010-11

⁽²⁾ Includes Library Science, Military Technologies, Multi/Interdisciplinary Studies, and Parks & Recreation.

⁽³⁾ Includes Personal Services, Vocational Home Economics, Protective Services, Construction Trades, Mechanics & Repairers, Precision Production Trade Transportation & Materials Moving.

TABLE 8 (page 3 of 6)

Bachelor's Degrees ⁽¹⁾

Public Institutions in Utah
2009-10 Compared to 2010-11

Field of Study	U of U		USU		WSU		SUU		DSC	
	2009-10	2010-11	2009-10	2010-11	2009-10	2010-11	2009-10	2010-11	2009-10	2010-11
Agriculture & Natural Resources	61	61	103	114	0	0	10	15	0	0
Architecture & Related Studies	45	37	29	25	0	0	0	0	0	0
Area, Ethnic & Cultural Studies	30	33	38	34	0	0	0	0	0	0
Biological Sciences/Life Sciences	131	122	75	75	67	51	60	64	18	19
Business & Marketing	614	629	511	556	393	393	163	145	99	101
Communications	378	415	110	103	46	63	68	59	37	47
Computer & Info Sciences	66	72	66	63	89	78	5	13	31	27
Education	81	100	405	444	235	238	161	235	51	54
Engineering & Related Technologies	314	336	206	216	86	75	20	24	0	0
English Language & Literature	169	154	129	123	70	59	20	23	10	18
Family and Consumer Sciences	252	235	121	148	38	47	42	37	0	0
Foreign Languages	135	143	41	35	42	30	14	12	0	0
Health Professions	340	364	152	189	436	487	90	76	24	33
History	73	96	68	59	41	31	10	14	0	0
Law & Legal Studies	0	0	16	10	96	0	47	0	0	0
Liberal Arts & Sciences/Gen. Studies	1	4	52	40	49	25	0	0	0	0
Mathematics	63	64	22	22	2	4	5	3	0	0
Other ⁽²⁾	393	391	204	153	4	3	30	29	35	51
Other Vocational Studies ⁽³⁾	0	0	17	27	52	178	19	57	7	9
Philosophy	24	28	7	16	0	5	0	0	0	0
Physical Sciences & Science Tech.	114	114	30	40	21	18	9	6	0	0
Psychology	222	257	84	88	63	55	65	67	0	14
Social Sciences & Public Admin.	852	861	456	524	106	135	37	41	0	0
Visual & Performing Arts	264	285	98	128	44	54	52	59	6	9
Total Degrees Awarded	4,622	4,801	3,040	3,232	1,980	2,029	927	979	318	382

Field of Study	UVU		USHE TOTAL	
	2009-10	2010-11	2009-10	2010-11
Agriculture & Natural Resources	0	0	174	190
Architecture & Related Studies	0	0	74	62
Area, Ethnic & Cultural Studies	0	0	68	67
Biological Sciences/Life Sciences	57	71	408	402
Business & Marketing	559	538	2,339	2,362
Communications	79	96	718	783
Computer & Info Sciences	100	145	357	398
Education	247	283	1,180	1,354
Engineering & Related Technologies	2	7	628	658
English Language & Literature	57	58	455	435
Family and Consumer Sciences	0	0	453	467
Foreign Languages	37	39	269	259
Health Professions	72	123	1,114	1,272
History	26	27	218	227
Law & Legal Studies	98	30	257	40
Liberal Arts & Sciences/Gen. Studies	0	0	102	69
Mathematics	6	7	98	100
Other ⁽²⁾	98	104	764	731
Other Vocational Studies ⁽³⁾	185	333	280	604
Philosophy	6	15	37	64
Physical Sciences & Science Tech.	18	20	192	198
Psychology	215	248	649	729
Social Sciences & Public Admin.	34	44	1,485	1,605
Visual & Performing Arts	84	88	548	623
Total Degrees Awarded	1,980	2,276	12,867	13,699

⁽¹⁾ Source: IPEDS Completions Surveys - Academic Years 2009-10 and 2010-11

⁽²⁾ Includes Library Science, Military Technologies, Multi/Interdisciplinary Studies, and Parks & Recreation.

⁽³⁾ Includes Personal Services, Vocational Home Economics, Protective Services, Construction Trades, Mechanics & Repairers, Precision Production Trades, Transportation & Materials Moving.

TABLE 8 (page 4 of 6)

Master's Degrees ⁽¹⁾

Public Institutions in Utah
2009-10 Compared to 2010-11

Field of Study	U of U		USU		WSU	
	2009-10	2010-11	2009-10	2010-11	2009-10	2010-11
Agriculture & Natural Resources	0	0	34	47	0	0
Architecture & Related Studies	44	43	9	6	0	0
Area, Ethnic & Cultural Studies	2	17	9	9	0	0
Biological Sciences/Life Sciences	19	24	22	17	0	0
Business & Marketing	383	385	189	164	126	122
Communications	7	9	0	1	0	0
Computer & Info Sciences	43	51	42	62	0	0
Education	108	110	173	180	31	48
Engineering & Related Technologies	175	179	108	125	0	0
English Language & Literature	13	9	23	20	21	21
Family and Consumer Sciences	25	22	27	52	0	0
Foreign Languages	24	14	0	0	0	0
Health Professions	213	228	49	77	38	53
History	7	9	5	9	0	0
Law & Legal Studies	0	0	0	0	15	0
Liberal Arts & Sciences/Gen. Studies	3	7	1	0	0	0
Mathematics	15	32	12	18	0	0
Other ⁽²⁾	58	44	0	0	0	0
Other Vocational Studies ⁽³⁾	0	0	0	0	0	17
Philosophy	3	6	0	0	0	0
Physical Sciences & Science Tech.	42	44	19	11	0	0
Psychology	49	54	50	31	0	0
Social Sciences & Public Admin.	280	313	47	20	0	0
Visual & Performing Arts	52	57	12	13	0	0
Total Degrees Awarded	1,565	1,657	831	862	231	261

Field of Study	SUU		UVU		USHE TOTAL	
	2009-10	2010-11	2009-10	2010-11	2009-10	2010-11
Agriculture & Natural Resources	0	0	0	0	34	47
Architecture & Related Studies	0	0	0	0	53	49
Area, Ethnic & Cultural Studies	0	0	0	0	11	26
Biological Sciences/Life Sciences	0	0	0	0	41	41
Business & Marketing	101	108	0	0	799	779
Communications	9	11	0	0	16	21
Computer & Info Sciences	0	0	0	0	85	113
Education	216	256	11	18	539	612
Engineering & Related Technologies	0	0	0	0	283	304
English Language & Literature	0	0	0	0	57	50
Family and Consumer Sciences	0	0	0	0	52	74
Foreign Languages	0	0	0	0	24	14
Health Professions	0	0	0	0	300	358
History	0	0	0	0	12	18
Law & Legal Studies	4	0	0	0	19	0
Liberal Arts & Sciences/Gen. Studies	0	0	0	0	4	7
Mathematics	0	0	0	0	27	50
Other ⁽²⁾	6	18	0	0	64	62
Other Vocational Studies ⁽³⁾	0	2	0	0	0	19
Philosophy	0	0	0	0	3	6
Physical Sciences & Science Tech.	0	0	0	0	61	55
Psychology	0	0	0	0	99	85
Social Sciences & Public Admin.	11	20	0	0	338	353
Visual & Performing Arts	5	5	0	0	69	75
Total Degrees Awarded	352	420	11	18	2,990	3,218

⁽¹⁾ Source: IPEDS Completions Surveys - Academic Years 2009-10 and 2010-11

⁽²⁾ Includes Library Science, Military Technologies, Multi/Interdisciplinary Studies, and Parks & Recreation.

⁽³⁾ Includes Personal Services, Vocational Home Economics, Protective Services, Construction Trades, Mechanics & Repairers, Precision Production Trades, Transportation & Materials Moving

TABLE 8 (page 5 of 6)

Doctorate Degrees ⁽¹⁾Public Institutions in Utah
2009-10 Compared to 2010-11

Field of Study	U of U		USU		USHE TOTAL	
	2009-10	2010-11	2009-10	2010-11	2009-10	2010-11
Agriculture & Natural Resources	0		2	4	2	4
Area, Ethnic & Cultural Studies	0		0	0	0	0
Biological Sciences/Life Sciences	39		14	19	53	19
Business & Marketing	8		0	0	8	0
Communications	5		0	0	5	0
Computer & Info Sciences	16		1	4	17	4
Education	14		27	26	41	26
Engineering & Related Technologies	48		14	18	62	18
English Language & Literature	3		0	2	3	2
Family and Consumer Sciences	0		5	5	5	5
Foreign Languages	3		0	0	3	0
Health Professions	29		1	0	30	0
History	4		0	0	4	0
Mathematics	10		5	1	15	1
Other ⁽²⁾	10		0	0	10	0
Other Vocational Studies ⁽³⁾	0		0	0	0	0
Philosophy	3		0	0	3	0
Physical Sciences & Science Tech.	36		5	8	41	8
Psychology	28		8	16	36	16
Social Sciences & Public Admin.	20		6	8	26	8
Visual & Performing Arts	3		0	0	3	0
Total Degrees Awarded	279	0	88	111	367	111

TABLE 8

First-Professional Degrees ⁽¹⁾Public Institutions in Utah
2008-09 Compared to 2009-10

Field of Study	U of U		USU		USHE TOTAL	
	2009-10	2010-11	2009-10	2010-11	2009-10	2010-11
Health Professions	233	279	5	6	238	285
Law & Legal Studies	120	140	0	0	120	140
Total Degrees Awarded	353	419	5	6	358	425

Notes:

⁽¹⁾ Source: IPEDS Completions Surveys - Academic Years 2009-10 and 2010-11⁽²⁾ Includes Library Science, Military Technologies, Multi/Interdisciplinary Studies, and Parks & Recreation.⁽³⁾ Includes Personal Services, Vocational Home Economics, Protective Services, Construction Trades, Mechanics & Repairers, Precision Production Trades, Transportation & Materials Moving

TABLE 8 (page 6 of 6)

Total Degrees and Awards by Field of Study⁽¹⁾

Public Institutions in Utah
2009-10 Compared to 2010-11

Field of Study	U of U		USU		WSU		SUU		SNOW	
	2009-10	2010-11	2009-10	2010-11	2009-10	2010-11	2009-10	2010-11	2009-10	2010-11
Agriculture & Natural Resources	62	61	147	197	0	0	11	16	4	6
Architecture & Related Studies	89	80	38	31	0	0	0	0	1	0
Area, Ethnic & Cultural Studies	32	51	47	43	0	0	0	0	0	0
Biological Sciences/Life Sciences	189	183	111	111	67	51	60	64	9	10
Business & Marketing	1007	1021	700	734	540	542	264	253	82	68
Communications	390	432	110	104	46	63	77	70	14	20
Computer & Info Sciences	125	135	109	129	134	123	5	13	11	6
Education	230	253	606	653	266	286	377	491	69	69
Engineering & Related Technologies	546	583	328	366	130	122	31	42	27	23
English Language & Literature	185	171	152	145	91	80	21	23	10	14
Family and Consumer Sciences	277	258	153	205	39	48	43	39	7	9
Foreign Languages	162	163	41	35	42	30	14	12	4	2
Health Professions	818	920	207	272	1134	1193	90	76	102	386
History	84	107	73	68	41	31	10	14	2	6
Law & Legal Studies	128	151	16	10	122	0	55	1	6	2
Liberal Arts & Sciences/Gen. Studies	71	71	532	503	1117	1069	298	340	266	267
Mathematics	88	109	39	41	2	4	5	3	1	6
Other ⁽²⁾	507	472	204	153	4	4	36	47	4	7
Other Vocational Studies ⁽³⁾	0	0	17	27	92	220	23	64	21	35
Philosophy	30	35	7	16	0	5	0	0	0	0
Physical Sciences & Science Tech.	192	193	54	59	28	22	9	6	4	3
Psychology	304	337	149	141	63	55	65	67	9	27
Social Sciences & Public Admin.	1265	1347	509	552	110	136	58	73	16	17
Visual & Performing Arts	330	350	110	141	57	61	57	64	51	58
Total Degrees Awarded	7,111	7,483	4,459	4,736	4,125	4,145	1,609	1,778	720	1,041

Field of Study	DSC		USU-Eastern		UVU		SLCC		USHE TOTAL	
	2009-10	2010-11	2009-10	2010-11	2009-10	2010-11	2009-10	2010-11	2009-10	2010-11
Agriculture & Natural Resources	0	0	0	0	0	0	0	1	224	281
Architecture & Related Studies	0	0	0	0	0	0	0	0	128	111
Area, Ethnic & Cultural Studies	0	0	0	1	0	0	0	0	79	95
Biological Sciences/Life Sciences	18	19	0	0	60	75	12	10	526	523
Business & Marketing	161	172	5	20	656	643	381	331	3,796	3,784
Communications	38	47	0	0	89	98	42	38	806	872
Computer & Info Sciences	32	42	0	1	121	178	71	72	608	699
Education	52	54	1	0	300	338	21	29	1,922	2,173
Engineering & Related Technologies	4	2	10	8	77	97	148	129	1,301	1,372
English Language & Literature	10	18	0	0	67	67	30	23	566	541
Family and Consumer Sciences	0	0	5	0	0	0	2	0	526	559
Foreign Languages	0	0	2	0	37	39	12	13	314	294
Health Professions	1016	689	94	79	171	249	857	902	4,489	4,766
History	0	0	0	0	39	40	14	21	263	287
Law & Legal Studies	7	0	11	0	217	42	92	36	654	242
Liberal Arts & Sciences/Gen. Studies	695	861	236	267	953	985	1772	1812	5,940	6,175
Mathematics	0	0	0	0	12	14	3	6	150	183
Other ⁽²⁾	35	51	0	0	122	149	21	12	933	895
Other Vocational Studies ⁽³⁾	13	41	16	30	344	627	437	467	963	1,511
Philosophy	0	0	0	0	7	15	0	0	44	71
Physical Sciences & Science Tech.	0	0	0	0	18	20	45	45	350	348
Psychology	0	14	0	0	286	344	54	73	930	1,058
Social Sciences & Public Admin.	0	0	0	0	34	44	110	109	2,102	2,278
Visual & Performing Arts	6	9	3	0	129	124	51	51	794	858
Total Degrees Awarded	2,087	2,019	383	406	3,739	4,188	4,175	4,180	28,408	29,976

Notes:

⁽¹⁾ Source: IPEDS Completions Surveys - Academic Years 2009-10 and 2010-11

⁽²⁾ Includes Library Science, Military Technologies, Multi/Interdisciplinary Studies, and Parks & Recreation.

⁽³⁾ Includes Personal Services, Vocational Home Economics, Protective Services, Construction Trades, Mechanics & Repairers, Precision Production Trades, Transportation & Materials Moving.

TABLE 9 (page 1 of 4)

Certificates & Degrees Awarded with Comparable Institutions Academic Year 2010 -11

Institution	Certificates						Doctor's Degrees		Total Degrees & Awards		
	< 1-year	1-2 Years	2-4 Years	Post-Baccalaureate	Post-Master's	Associate	Bachelor's	Master's		Research/Scholarship	Professional Practice
University of Utah	0	0	0	239	63	0	4,801	1,657	304	419	7,483
University of California-Irvine	0	0	0	167	0	0	6,298	1,104	374	102	8,045
University of California-San Diego	0	0	0	0	276	0	6,336	1,070	484	190	8,356
University of Illinois at Chicago	0	0	0	4	48	0	3,526	2,057	326	588	6,549
University of Iowa	0	0	51	562	28	0	4,543	1,414	432	517	7,547
University of New Mexico-Main Campus	0	0	0	0	35	0	3,350	1,190	165	303	5,043
University of North Carolina at Chapel Hill	0	4	0	0	0	0	4,654	1,924	506	666	7,754
University of Cincinnati-Main Campus	2	218	1	64	27	112	4,147	2,078	220	415	7,284
University of Pittsburgh-Pittsburgh Campus	874	0	27	420	16	0	4,212	2,316	519	594	8,978
University of Virginia-Main Campus	0	0	0	0	32	0	3,637	1,616	421	512	6,218
University of Washington-Seattle Campus	0	0	0	0	0	0	7,590	3,084	723	528	11,925

Utah State University

Institution	Certificates						Doctor's Degrees		Total Degrees & Awards		
	< 1-year	1-2 Years	2-4 Years	Post-Baccalaureate	Post-Master's	Associate	Bachelor's	Master's		Research/Scholarship	Professional Practice
Utah State University	0	11	0	0	9	505	3,232	862	111	6	4,736
Colorado State University	0	0	0	0	0	0	4,341	1,390	203	137	6,071
University of Idaho	69	0	0	0	43	0	1,688	573	63	102	2,538
Kansas State University	0	0	0	0	0	65	3,344	989	162	107	4,667
Montana State University	0	13	0	0	1	9	1,809	491	56	0	2,379
University of Nebraska-Lincoln	0	0	0	0	8	6	3,621	874	287	139	4,935
University of Nevada-Reno	0	0	0	0	17	0	2,412	642	106	55	3,232
New Mexico State University-Main Campus	0	0	0	11	12	10	2,387	920	105	0	3,445
Oregon State University	0	0	0	219	0	0	3,443	738	172	140	4,712
Washington State University	74	0	0	553	90	0	5,221	763	197	210	7,108
University of Wyoming	3	0	0	53	0	0	1,853	482	65	123	2,579

Certificates & Degrees Awarded with Comparable Institutions Academic Year 2010 -11

TABLE 9 (page 2 of 4)

Certificates & Degrees Awarded with Comparable Institutions Academic Year 2010 -11

Weber State University

Institution	Certificates						Doctor's Degrees		Total Degrees & Awards		
	< 1-year	1-2 Years	2-4 Years	Post-Baccalaureate	Post-Master's	Associate	Bachelor's	Master's		Research/Scholarship	Professional Practice
Weber State University	57	0	0	0	0	1,798	2,029	261	0	0	4,145
University of Alaska Anchorage	116	78	0	63	0	740	1,001	305	0	0	2,303
University of North Florida	0	0	0	0	0	347	2,995	559	8	28	3,937
Boise State University	0	36	24	121	0	196	2,408	601	11	0	3,397
Eastern Kentucky University	0	39	0	8	8	215	2,135	692	0	4	3,101
Northern Kentucky University	0	0	8	55	32	105	1,974	485	2	177	2,838
Northwestern State University of Louisiana	0	0	0	58	18	724	1,089	249	0	0	2,138
Ferris State University	185	0	0	68	0	729	2,229	169	0	178	3,558
Youngstown State University	0	8	0	23	0	201	1,468	351	0	22	2,073
Clarion University of Pennsylvania	0	0	0	0	3	145	982	511	0	0	1,641
Utah Valley University	2	83	0	0	0	1,809	2,276	18	0	0	4,188

Southern Utah University

Institution	Certificates						Doctor's Degrees		Total Degrees & Awards		
	< 1-year	1-2 Years	2-4 Years	Post-Baccalaureate	Post-Master's	Associate	Bachelor's	Master's		Research/Scholarship	Professional Practice
Southern Utah University	13	7	0	0	0	359	938	420	0	0	1,737
Sonoma State University	0	0	0	0	0	0	1,740	273	0	0	2,013
Eastern Connecticut State University	0	0	0	0	0	13	1,057	87	0	0	1,157
Columbus State University	1	159	0	1	58	32	904	351	0	0	1,506
Georgia College & State University	0	0	0	0	62	0	1,105	407	0	0	1,574
Truman State University	0	0	0	0	0	0	1,170	217	0	0	1,387
SUNY at Geneseo	0	0	0	0	0	0	1,176	93	0	0	1,269
Western Carolina University	0	0	0	0	5	0	1,654	671	14	0	2,344
Southern Oregon University	0	0	0	254	0	0	669	249	0	0	1,172
Austin Peay State University	0	0	0	2	7	226	1,252	289	0	0	1,776
Christopher Newport University	0	0	0	0	0	0	994	98	0	0	1,092

Certificates & Degrees Awarded with Comparable Institutions Academic Year 2010 -11

TABLE 9 (page 3 of 4)

Certificates & Degrees Awarded with Comparable Institutions Academic Year 2010 -11

Snow College

Institution	Certificates						Doctor's Degrees		Total Degrees & Awards		
	< 1-year	1-2 Years	2-4 Years	Post-Baccalaureate	Post-Master's	Associate	Bachelor's	Master's		Research/Scholarship	Professional Practice
Snow College	237	56	0	0	0	748	0	0	0	0	1,041
North Idaho College	43	216	0	0	0	536	0	0	0	0	795
Western Nevada College	0	33	0	0	0	450	11	0	0	0	494
Santa Fe Community College	45	203	0	0	0	303	0	0	0	0	551
Corning Community College	0	30	0	0	0	680	0	0	0	0	710
Rogue Community College	26	153	0	0	0	385	0	0	0	0	564
Centralia College	252	45	0	0	0	406	0	0	0	0	703
South Puget Sound Community College	48	131	37	0	0	1,007	0	0	0	0	1,223
Whatcom Community College	0	59	0	0	0	877	0	0	0	0	936
Coconino County Community College	24	22	0	0	0	236	0	0	0	0	282

0

Dixie State College

Institution	Certificates						Doctor's Degrees		Total Degrees & Awards		
	< 1-year	1-2 Years	2-4 Years	Post-Baccalaureate	Post-Master's	Associate	Bachelor's	Master's		Research/Scholarship	Professional Practice
Dixie State College of Utah	469	88	0	0	0	1,080	382	0	0	0	2,019
University of Arkansas-Fort Smith	275	95	0	0	0	402	531	0	0	0	1,303
Humboldt State University	0	0	0	0	0	0	1,270	164	0	0	1,434
Fort Lewis College	0	0	0	0	0	3	635	0	0	0	638
Mesa State College	109	115	0	0	0	170	639	51	0	0	1,084
Colorado State University-Pueblo	0	0	0	0	0	0	714	132	0	0	846
Clayton State University	1	52	0	0	0	84	1,001	62	0	0	1,200
Macon State College	0	13	0	0	0	313	517	0	0	0	843
Missouri Western State University	0	7	0	10	0	48	658	21	0	0	744
Farmingdale State College	0	33	0	0	0	483	868	0	0	0	1,384
Central Washington University	94	0	0	0	0	0	2,436	207	0	0	2,737

Certificates & Degrees Awarded with Comparable Institutions Academic Year 2010 -11

TABLE 9 (page 4 of 4)

Certificates & Degrees Awarded with Comparable Institutions Academic Year 2010 -11

Utah Valley University

Institution	Certificates						Doctor's Degrees		Total Degrees & Awards		
	< 1-year	1-2 Years	2-4 Years	Post-Baccalaureate	Post-Master's	Associate	Bachelor's	Master's		Research/Scholarship	Professional Practice
Utah Valley University	2	83	0	0	0	1,809	2,276	18	0	0	4,188
University of Alaska Anchorage	116	78	0	63	0	740	1,001	305	0	0	2,303
California State University-Northridge	0	0	0	0	0	0	6,723	1,922	0	8	8,653
Metropolitan State College of Denver	0	0	0	0	0	0	2,899	0	0	0	2,899
Kennesaw State University	0	0	0	4	16	0	3,319	853	8	0	4,200
Boise State University	0	36	24	121	0	196	2,408	601	11	0	3,397
Indiana U.-Purdue University-Fort Wayne	50	22	0	19	0	377	1,144	243	0	0	1,855
Northern Kentucky University	0	0	8	55	32	105	1,974	485	2	177	2,838
Ferris State University	185	0	0	68	0	729	2,229	169	0	178	3,558
Youngstown State University	0	8	0	23	0	201	1,468	351	0	22	2,073
Weber State University	57	0	0	0	0	1,798	2,029	261	0	0	4,145

Salt Lake Community College

Institution	Certificates						Doctor's Degrees		Total Degrees & Awards		
	< 1-year	1-2 Years	2-4 Years	Post-Baccalaureate	Post-Master's	Associate	Bachelor's	Master's		Research/Scholarship	Professional Practice
Salt Lake Community College	398	369	0	0	0	3,413	0	0	0	0	4,180
Pima Community College	810	2,064	0	0	0	2,283	0	0	0	0	5,157
Sacramento City College	243	232	21	0	0	1,124	0	0	0	0	1,620
Broward College	475	311	1	0	0	4,881	22	0	0	0	5,690
Macomb Community College	416	585	0	0	0	2,799	0	0	0	0	3,800
College of Southern Nevada	0	221	0	0	0	2,030	20	0	0	0	2,271
Central New Mexico Community College	1,055	1,534	138	0	0	2,051	0	0	0	0	4,778
Central Piedmont Community College	1,041	116	0	0	0	1,511	0	0	0	0	2,668
Sinclair Community College	1,779	373	0	0	0	1,738	0	0	0	0	3,890
Portland Community College	474	279	71	0	0	2,774	0	0	0	0	3,598
Austin Community College District	66	690	0	0	0	1,507	0	0	0	0	2,263